

Winds Fan Flames in Three Counties

Fire in Glendale-Flintridge Area Contained After 5-Hour Battle

BY JOHN KENDALL

Times Staff Writer

Strong, gusty Santa Ana winds fanned brush fires in three counties Friday, the 12th consecutive day Southern California has been swept by warm, drying blasts from the interior.

The winds produced a day of spectacular visibility, dropped humidity to a lip-drying low, increased fire danger and encouraged additional thousands of persons to go to the beaches.

Winds up to 40 m.p.h. lashed the Glendale-Flintridge area where a blaze raced across 150 acres, scorched two homes and for several hours threatened an expensive residential area in Glendale.

Another 300 acres was blackened by a brush fire east of Hemet, and 125 acres was burned in a remote area about 30 miles east of San Diego.

Battle Five Hours

More than 225 Los Angeles County and Glendale firemen battled five hours to contain the Glendale-Flintridge fire. It broke out about noon in the Sugar Loaf Drive district of Flintridge.

Moving south and southwest into Glendale, the blaze approached the Emerald Isle residential district, then skirted the Chevy Chase golf course on the west. Humidity dropped as low as 7%.

Rising clouds of gray-brown smoke, visible in downtown Los Angeles, prompted scores of telephone calls to police and fire officials. The fire was contained at 5:10 p.m. but firemen remained to patrol the area throughout the night.

Fire fighters still were on the lines

Friday night in a brush-covered hilly area near Hemet in Riverside County. They hoped to control the 300-acre blaze by this morning.

The fire broke out Friday afternoon, threatening several homes and citrus groves as it roared into Bautista Canyon in the Val Vista district.

At its peak, more than 350 men from the U.S. Forest Service and State Division of Forestry fought the fire, manning 18 fire trucks, 10 bulldozers and three air tankers.

Classified as Accidental

Officials classified the fire as "accidental manmade" but did not elaborate on its cause.

In San Diego County, however, a fire near Sweetwater Reservoir was blamed on sparks from a motorcycle. Pushed by winds, it spread rapidly over 125 acres but 100 men controlled it in four hours.

Winds also blew a sea gull against a power line, cutting off electricity for nearly an hour in western Imperial Beach, south of San Diego.

In Orange County, a small single-engine plane parked at the Orange County Airport was flipped over by winds gusting up to 40 m.p.h. Damage was estimated at \$3,100.

Power and phone lines were downed by strong winds in Fontana, Redlands and Rialto. Trees were toppled and store windows broken in Riverside.

Five of Burbank's 13 on-duty patrol cars were stranded for about 20 minutes shortly before noon Friday when high winds blew down a tree across the upper reaches of Country Club Canyon Drive. The of-

Please Turn to Page 3, Col. 8

FIRES

Continued from First Page

Officers had responded to a burglary call. A city landscaping crew cleared the road with power saws.

Winds in Burbank also overturned 112 decorated Christmas trees on the city's six-block Golden Mall, causing damage estimated at \$1,500.

Wind gusts were reported at 69 m.p.h. at Rialto's Miro Airport, at 68 m.p.h. in Fontana and at 50 m.p.h. at Ontario International Airport and Van Nuys.

The warm winds continued to dry out Southern California forests, raising fire danger.

"The fire danger is getting high," said William Beaty, fire control officer for Angeles National Forest. "It's time to start taking precautions again."

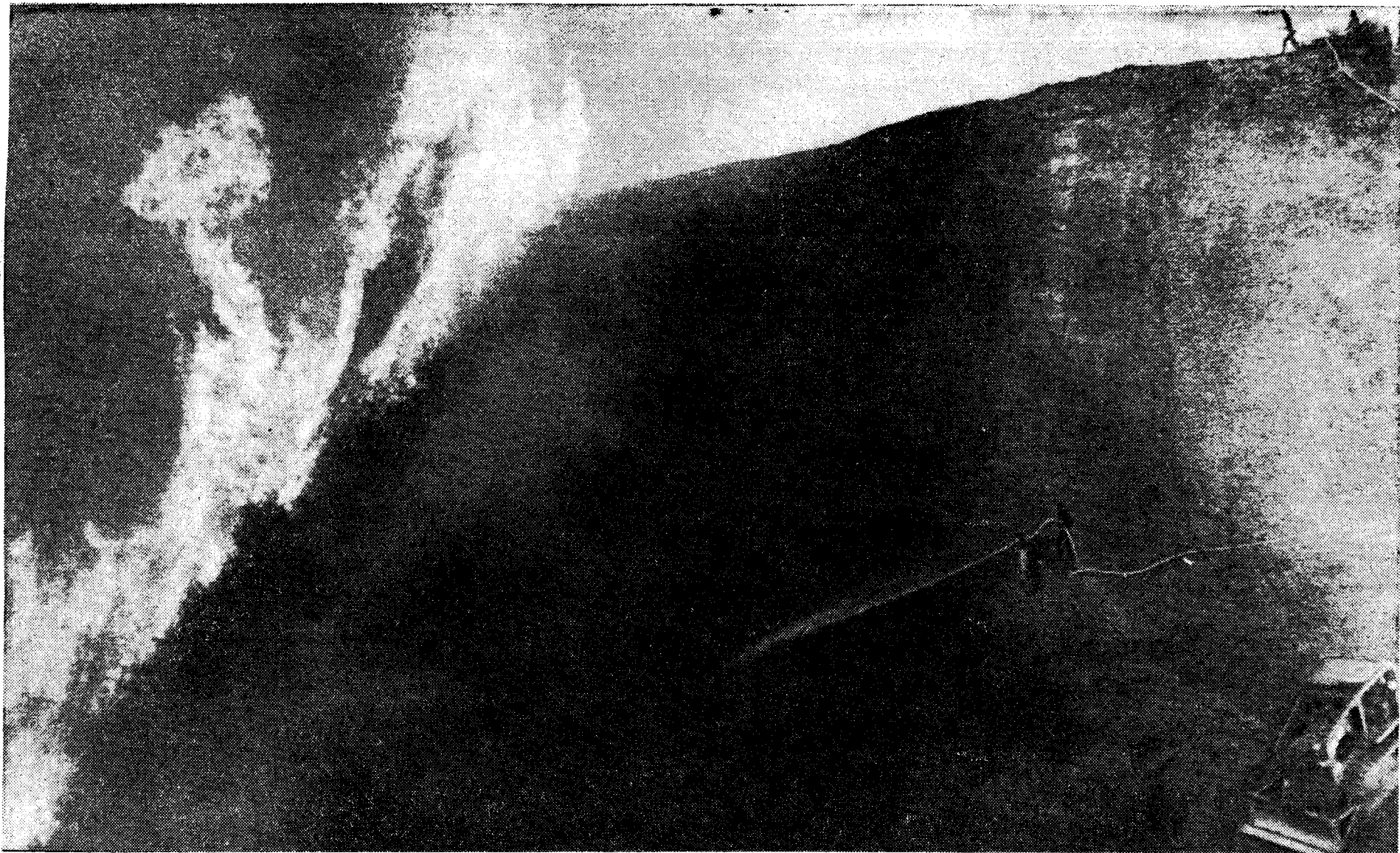
Southern California warmed up under the Santa Ana winds. Long Beach was the warmest spot in the nation with a high reading of 83.

Another warm day is expected today with a predicted high of 80 at the Civic Center, the same as Friday's top reading.

Another picture in Part 2, Page 5.



APPLYING THE DAMPER—L.A. County Fire Department helicopter drops water on Flintridge blaze.
Times photo by Boris Yaro



CLOSE-UP COMBAT—Two groups of firefighters, top and center right, battle brush fire in the

hills of Glendale-Flintridge area. Blaze fanned by strong, dry winds threatened expensive residential

area around northeastern edge of Glendale but the damage was limited to the scorching of two homes.

Times photo by Boris Yaro