

# Planners Study Future of Chevy Chase Country Club

By **BOB DRISCOLL**  
Staff Writer

Last Monday's three-hour hearing on what to do with the Chevy Chase Country Club is being followed up by a week-long Glendale Planning Commission study.

At the close of Monday's meeting, the commission moved to study the arguments, pro and con, and make a decision at next Monday's planning meeting (which begins at 3 p.m. in city hall).

**Uppermost in the minds of these five commissioners will be the recommendation by Planning Director J. A. Mellen**

to allow the school district use of only 4-6 acres of the 38-acre golf course.

This would allow the school district to build an elementary school but not a junior high or high school as planned.

### OPEN SPACE

The club was placed in the special recreation zone by city council which wants to see it preserved as "open space."

"As far as we are concerned," said Mellen, "the school district will be able to locate other sites for secondary schools as they are needed."

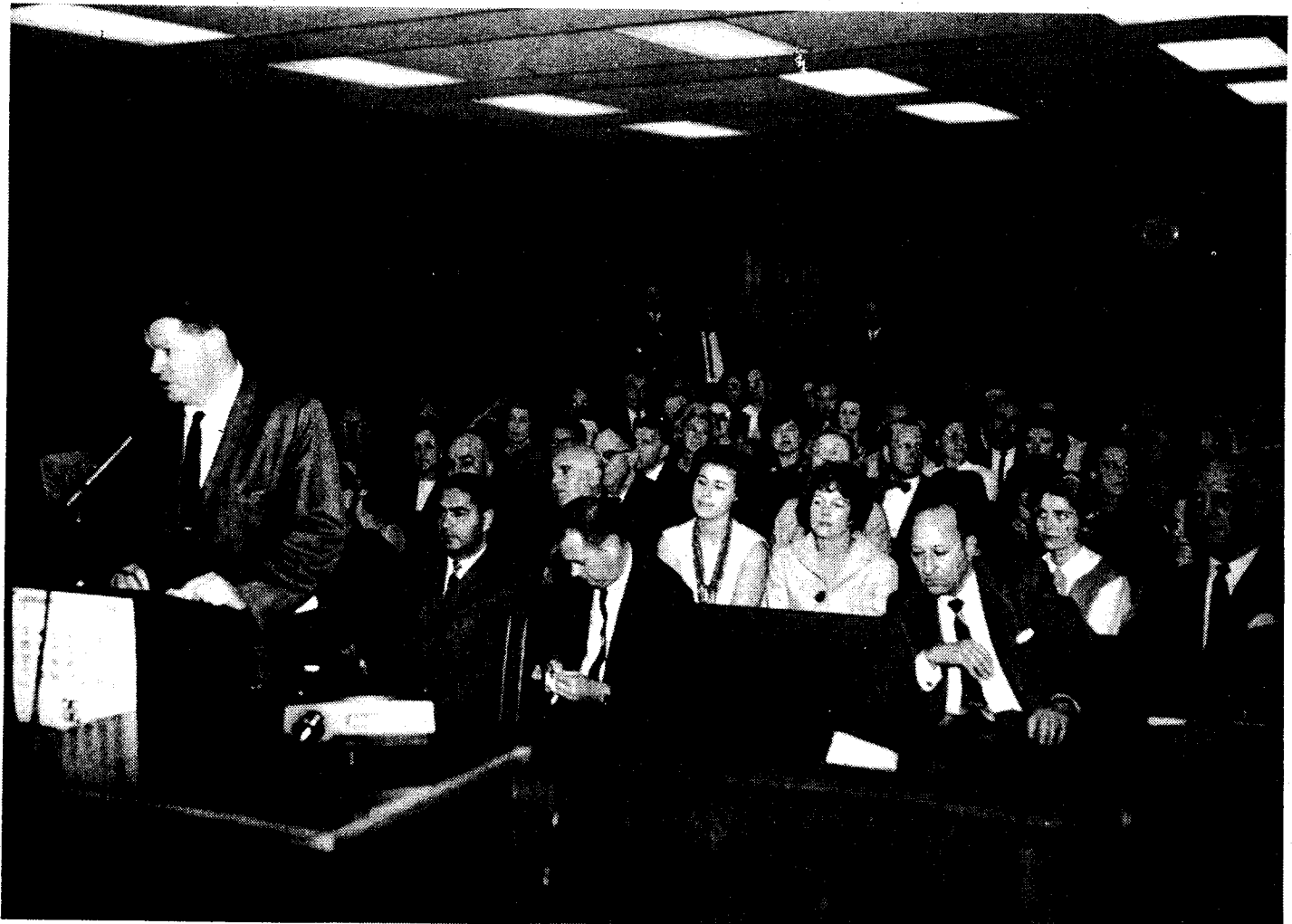
Nobody has argued about the need for an elementary school,

however. The only problem is where to build it. The school district offered \$900,000 for Chevy Chase Country Club for an elementary school now and secondary schools later.

"The latter would mean an unnecessary pulling in of students from Verdugo Woodlands and Montrose," Mellen continued. "Even with the street work that needs to be accomplished, it would be better to take students out of the canyon."

### TRAFFIC

At present, canyon residents have only Chevy Chase road for ingress and egress. They com-  
—CHEVY CHASE, pg. 12, sec. 1



**WANTS CHEVY CHASE CLUB FOR SCHOOLS**—Wayland Parsons, deputy superintendent of Glendale schools, asks planning commission Monday to grant the district "full use of site as requested" which means for three school complex. City planners, however, recommended that only 4-6 acres of the 38 acre site be used for immediate needs and the remainder of

the golf course be left as "open space." A citizens' committee, sitting in the front row, asked that the golf course be left in its entirety and that the schools take one of two other sites found for them. Planning commission will announce its decision next Monday.  
—Ledger Photo

# -Chevy Chase

(Continued from page 1)

plained vehemently about adding to the traffic congestion at Monday's meeting.

The alternate solution to the problem, as presented by Architect Howard Van Heuklyn, who heads the canyon's "master plan" committee, would be a choice of two possible elementary school sites located off Chevy Chase road.

"School board members contend they cannot afford to build a road," said Mellen, "and each recommendation takes off from some future road.

"The one on Emerald drive is just off Chevy Chase drive," he added, "while the one on Thurlene is about three-quarters of a mile. The residents planned for access from the Ridge road which could not be built for three or four years and the school district needs an elementary school now."

Mellen went on to say that the road system will come regardless of where the schools are located. But he realizes the need for an elementary school in the canyon now.

## FEASIBLE

**"There's feasibility in what the citizens propose," he commented, indicating that the Emerald drive site could be utilized for an elementary school without too much road building. That would leave the site north of Glendale College as a secondary school site at a later date.**

The problem still remains of what to do with the golf course. School board members contend that it will be subdivided unless someone buys it. Before the club owners could subdivide, however, there would have to be a zone change.

Providing there was a 100 per cent protest of property owners around the club, the special recreation zone could not be changed without a unanimous vote of council.

Residents of the canyon would like to see the city purchase the club and open its facilities to the public. They explain that it will be more than ten years before the city opens Scholl Canyon as a public golf course.

"The city was unwilling to buy it at \$500,000 seven years ago," Mellen said of the nine-hole Chevy Chase course. "We haven't got \$900,000 to buy it right now, but council wants it to remain as open space.

"If the school district buys it," he continued, "they would provide an additional hole and

lease it to the club members."

## PARSONS

Deputy Superintendent Wayland Parsons told the school commission Monday that the school district would "keep it as a golf course until we are ready to begin construction. We believe it would be possible to lease other property to replace the one hole that would be taken by an elementary school."

Parsons also maintained, contrary to Mellen, that the district will need a secondary school in the canyon around 1980. He contended that the school system would reduce the heavy flow of traffic on Chevy Chase road, rather than add to it.

"We are in favor of full use of the (Chevy Chase Country Club) site as requested," Parsons made it clear.

While board members would look with favor upon someone else buying and maintaining the club for recreation, there have been no other offers to purchase and the school board's offer is still binding.