

Glendale News ~ Press

Associated Press United Press International Copley News Service UPI Telephoto
 10 Cents on News Stands 111 North Isabel Telephone 241-4141 or 245-6431 \$1.75 Monthly By Carri
 18 Pages—Sec. A Glendale, California, Tuesday, Nov. 23, 1965 Vol. 61—No. 17

Floods Ravage Glendale Homes

House Falls Into Gully

By JULIE RUSSO
 News-Press Staff Writer

Unrelenting rain through the night pounded Glendale and the Foothills in thunderstorm force, ravaging six homes, threatening lives and leaving rivers of mud and broken streets in its wake.

Tons of dirt and rock crumbled from a 60-foot bank behind a house at 754 Solway and

RAINFALL TABLE

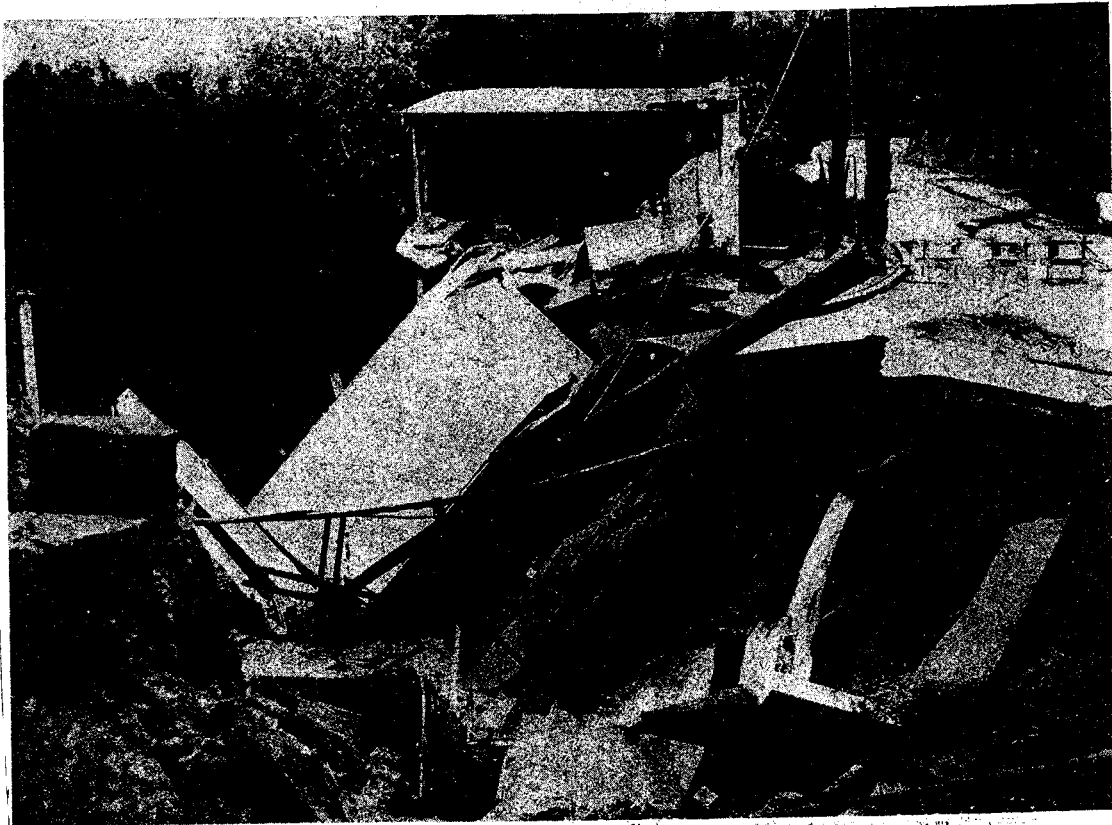
	24 Hrs.	Season	Last Yr.
GLENDALE	4.20	13.84	2.68
La Crescenta	4.86	20.25	3.58
Tuliza	6.10	12.38	3.45
La Canada	3.78	14.01	3.69

smashed into the living room and a bedroom as the five residents dashed for safety.

Floodwaters roared into already waterlogged banks in Chevy Chase Canyon, sweeping away a bank and causing a house, a street section and tons of earth to collapse into a 50-foot-deep gully gouged by the force of rushing waters.

4-Inch Rain

More than 4 inches of rain fell in Glendale in the last 24 hours—rain that created a havoc of landslides, mud-blocked streets and crumbling hillsides.



WASHED OUT—Rain-ravaged banks finally gave way to the relentless pounding, sending part of a house at 1616 Golf Club Drive tumbling into a 50-

News-Press Photo by Louis Daisbeck
 foot-deep gully to join a pile of debris from a collapsed street section and a neighboring backyard. Slides continued to eat away hillsides.

The house, owned by Richard Butler at 1616 Golf Club Drive, began to crack and slip from its already precarious perch on hillside stilts Monday night.

Its residents had been evacuated earlier Monday, taking with them a seriously ill baby to temporary quarters.

The house's slow fall to destruction began about 3:30 p.m. Monday, and by 9:30 p.m., an entire section of the luxurious house had fallen into the gully, smashing down power poles, trees, furniture and other items.

The collapse of Golf Club Drive portion resulted in the rupture of a 12-inch water main serving canyon homes above the golf course.

Water Gushes

Water gushed from the broken main, joining cascades of run-off charging over the broken street in a rain-made waterfall.

Public Service crews, however, immediately manned a nearby pumping station to maintain normal water service in the upper canyon area.

Several utility poles also were lost in the area, but crews were

—Turn to Page 3, Col. 1—

Big Storm Subsides

—Continued From Page 1-A—
caused the biggest problems.

Pushed by wind gusts reaching 40 miles an hour, the murky stream's level rose more than a foot between 2:30 and 2:45 p.m. Wednesday.

The huge storm drain just south of Cascadia, which swallows most of the canyon runoff and carries it underground to the Verdugo Wash at Geneva and Monterey, reached capacity at 2:45 p.m.

The overflow ebbed past the Chevy Chase Canyon gates just east of Cascadia, causing Knelser to remark "that's the first time the storm drain's overflowed since it was built in 1957."

About the only vehicles moving in the canyon Wednesday were Post Office "mailsters," city trucks and fire engines.

Wall Collapses

At the height of the storm, a fire engine responded to a call at 3247 Cornwall Drive, where a floor furnace had been drowned by storm runoff, filling the house with smoke.

Across the street, a retaining wall collapsed, showering the resident's car with chunks of concrete.

At Chevy Chase Drive and Kennington, a delivery truck stalled when it tried to ford the two-foot deep river rushing down Chevy Chase Drive.

Surprisingly, there was no major damage and debris basins held. Old trouble spots, such as the 700 block of Solway, where homes on both sides of the street sit under 60-foot high banks, and Golf Club Drive and Sheridan Road, where a house fell into a 50-foot gully in last month's storm came through the latest rain relatively unscathed.

The contrast between old and new methods of hillside home-building was never more evident than during Wednesday's storm.

New tracts, such as College Hills Estates, poured clear water off their steep slopes, thanks to a combination of terracing, extensive planting and concrete flumes.

But older neighborhoods once again contributed huge slabs of mud and debris and chunks of rock to the canyon river. Many older homes were cut off from the street by flash floods inundating front yards and driveways.

On the other side of Glendale, the Verdugo Wash between Crescenta Valley Park and Oakmont Country Club rose to within a foot of bridges connecting subdivisions on the northern slopes of the Verdugo Mountains with Honolulu and La Crescenta Avenue.

Power Fails

Police reported several bridges in West and North Glendale temporarily "washed out."

Power failures caused by trees toppling onto electric lines were numerous. Falling trees also crumpled and scratched several parked cars.

Many intersections, especially those on Verdugo Road and Canada Boulevard between the two streets' north and south forks, were hub-deep under mud and water flowing down from nearby canyons.

The freakish nature of the storm was illustrated by one of nature's more unusual shows.

Sheets of rain falling vertically in Chevy Chase Canyon looked like inverted columns of smoke, as they were blown sideways over the San Rafaels by the erratic wind.

But city workers, who cleared mud and debris until midnight Wednesday and were back on the job early today, had little time to contemplate such natural phenomena.