

Face Lift

Chevy Chase Folk Grimace And Bear It

By **MARTHA THAYER**
News-Press Staff Writer

They're being good sports about it.

Those several hundred Chevy Chase Canyon residents who are living in the awesome presence of a \$3.8 million storm drain and street improvement project that will give the drive a face lift.

Some of their houses appear about to be swallowed by the giant ditch which will transform Chevy Chase from a rainy season river to a passable thoroughfare.

When the storm drain is complete there will be 10,250 feet of it.

It will run under Chevy Chase from Glenoaks Boulevard to the golf course.

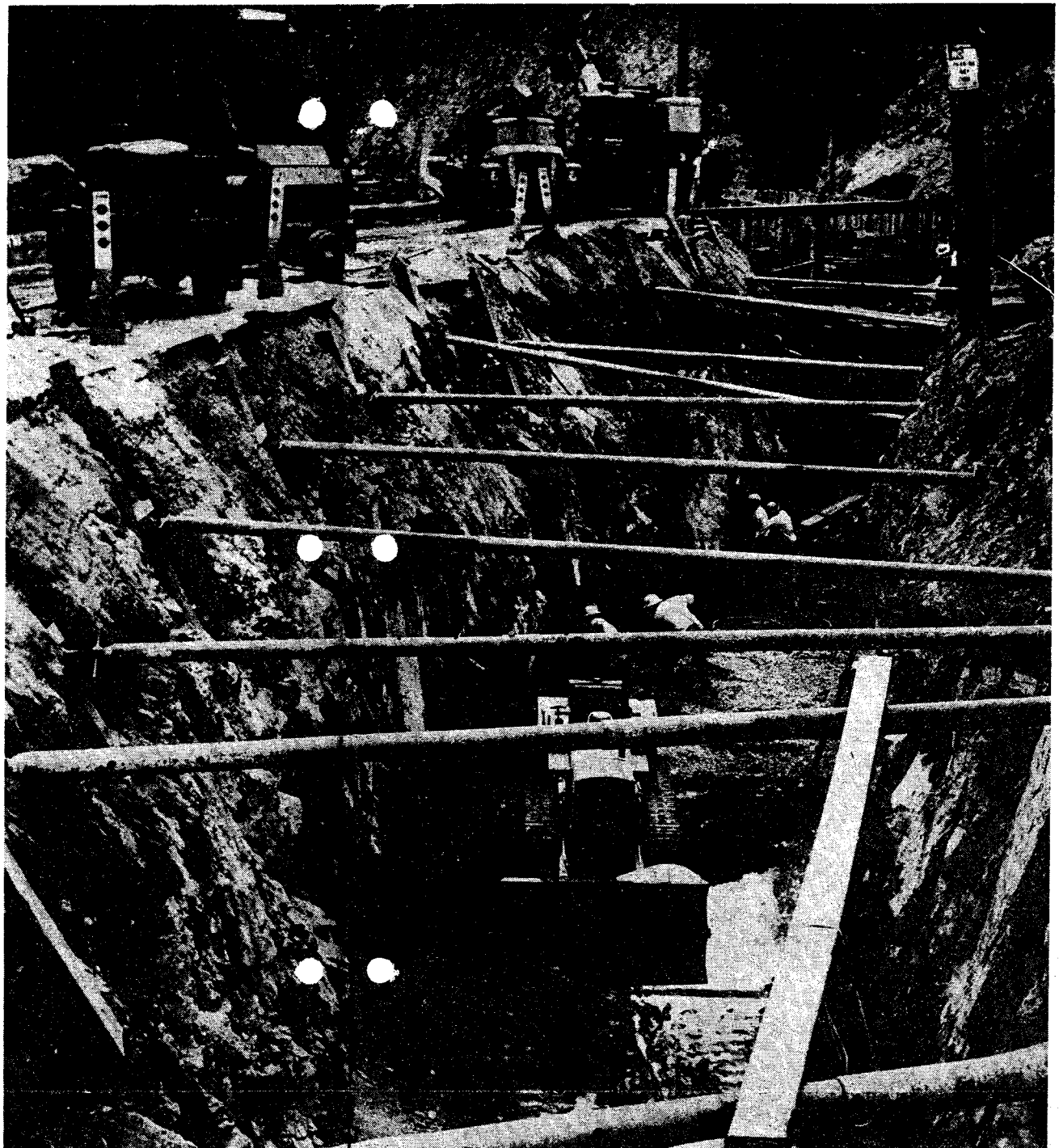
It blocks driveways . . . and walkways.

It forces a choice between staying home with the noise or going out by the devious detour.

But like good neighbors, canyon residents are content to complain a little — and live with the noise.

Construction in the canyon will quiet down during the rainy winter months — to be resumed next spring.

But the storm drain construction will take up winter residence at the Glenoaks end where the drain will grow to maximum size of 16 feet wide and 14 feet deep.



When the storm drain is complete there will be 10,250 feet of it.

It will run under Chevy Chase from Glenoaks Boulevard to the golf course.

Until it's complete, canyon residents will just have to accept the storm drain as a noisy neighbor.

It wakes up at 7 a.m. with twice as much massive equipment as anyone would think could be squeezed on the narrow roadway.

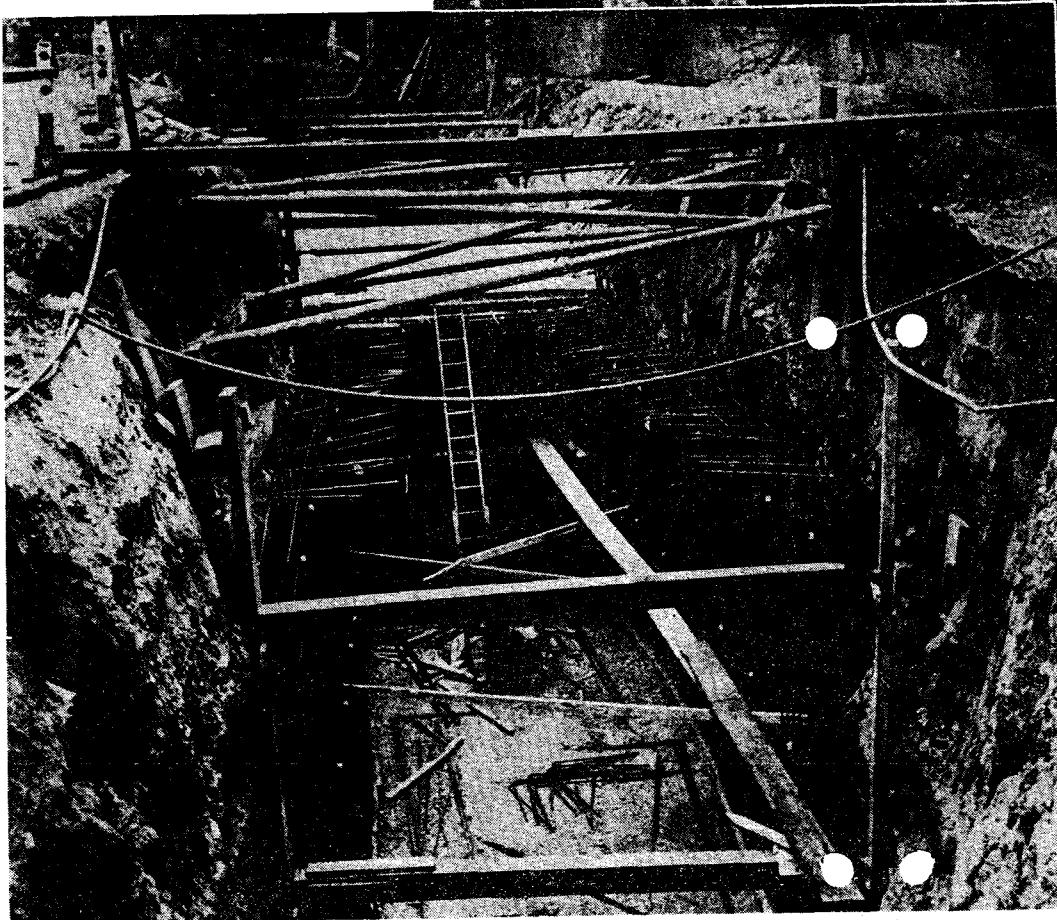
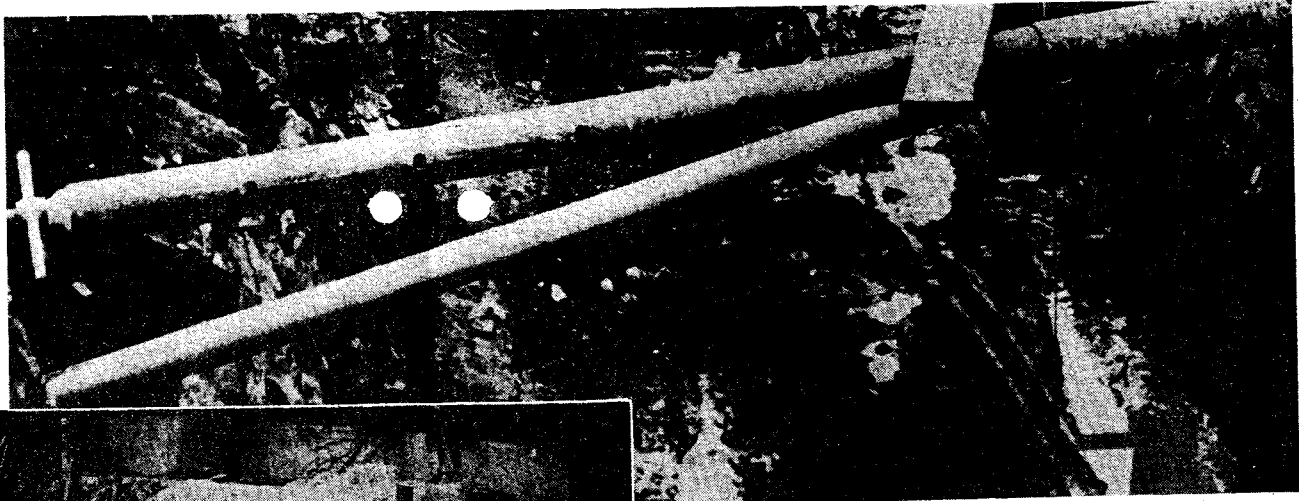
resumed next spring.

But the storm drain construction will take up winter residence at the Glenoaks end where the drain will grow to maximum size of 16 feet wide and 14 feet deep.

And the residents of Chevy Chase Drive can look forward to next year, when construction will have moved out of their neighborhood for good.

And the storm drain will have moved from the street to underground.

News-Press photos by Louie Deisbeck



Drain work brings trickle of protest, but it will hold off floods in winter.

Archways of steel poles and wood beams form the pattern of progress on Chevy Chase.