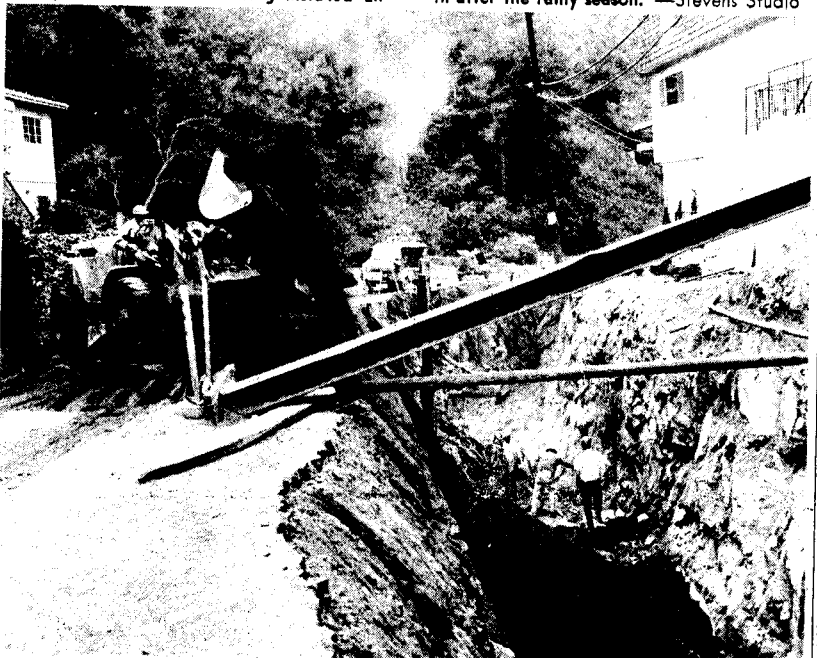


October - 1969  
Independent



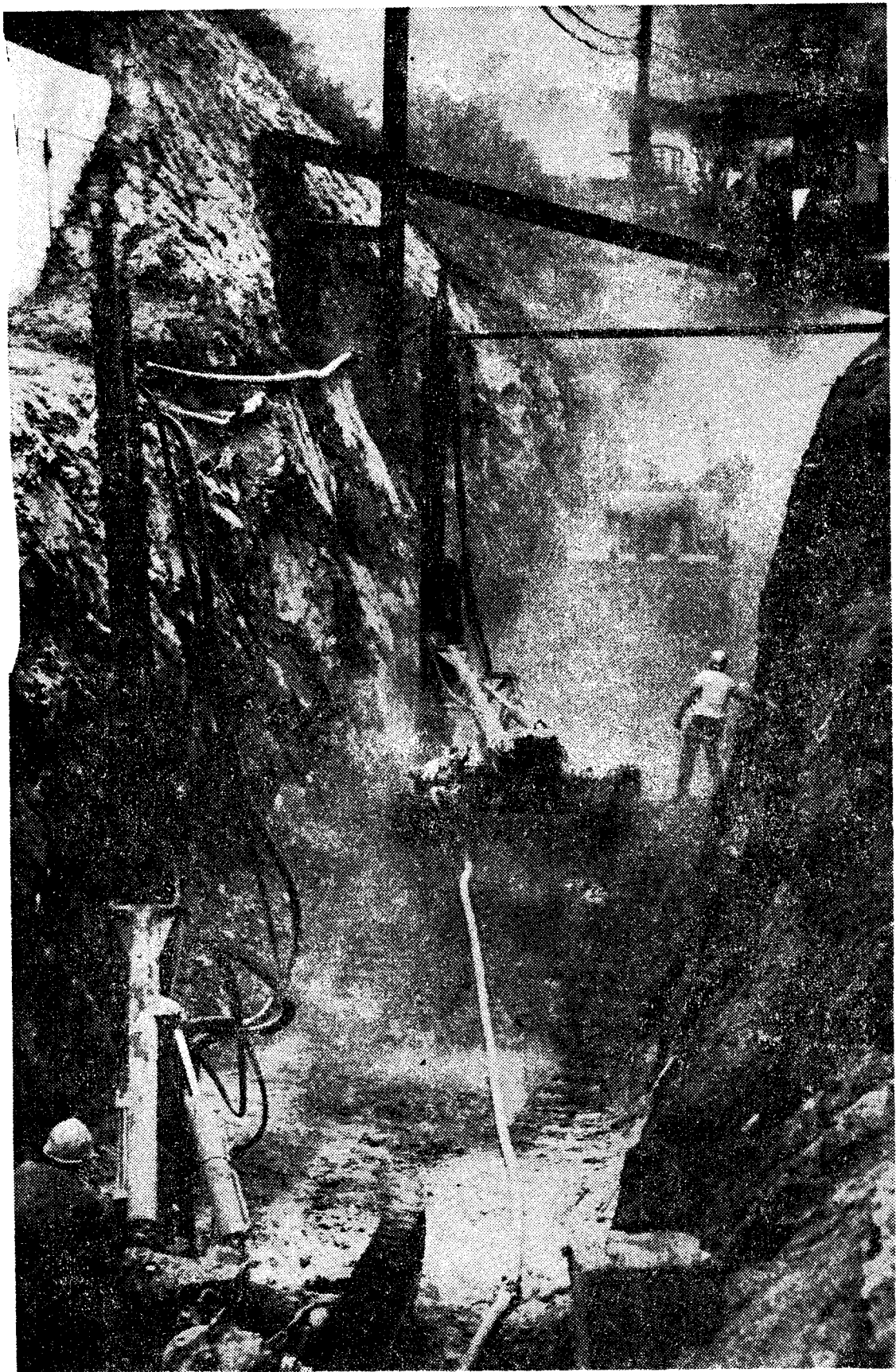
**JUST BEGINNING** — Norco Construction Co. crews are really moving earth in a 700-foot portion of the Chevy Chase Canyon storm drain project designed by the City of Glendale and being installed un-

der Los Angeles County Flood Control District direction. Initial work will be terminated as soon as the concrete box is installed, and the contractor will not return until after the rainy season. —Stevens Studio



**ROCKY GROUND** — Motorists have been using alternate routes around Chevy Chase Canyon flood control work. This \$3,080,500 contract calls for several miles of concrete box construction to handle

heavy runoff from winter rains. Construction deadline is November, 1969. Work also has involved undergrounding utilities, and installation of a completely new roadway surface. —Stevens Studio



## Dust-up on Chevy Chase

Workers dig deep on Chevy Chase. Not digging it at all are the families living nearby. It's noisy—and dusty. For what's going on, see photo-story on page I-D.