

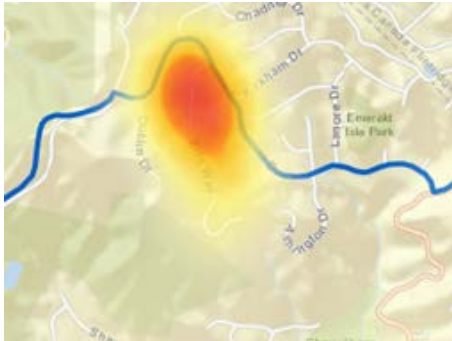
TERMINOLOGY

Burglary – the breaking and entering of a locked structure / vehicle to commit a felony or theft within.

Please see CA Penal Code 459: <http://www.leginfo.ca.gov/cgi-bin/displaycode?file=458-464&group=00001-01000§ion=pen>

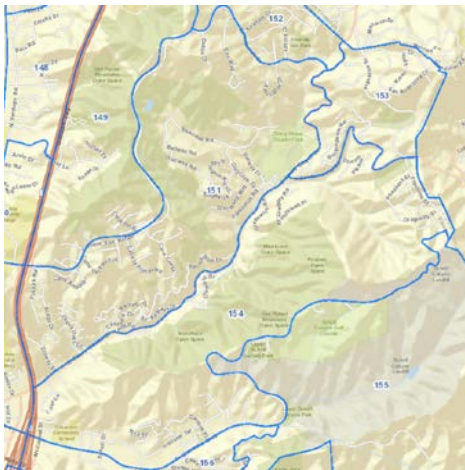
Field Interview (FI) – a consensual contact between an officer and an individual where the officer may collect personal data for informational purposes.

Hotspot – an area experiencing a significant amount of reported activity (usually observed during a specific window in time).



Method of Operation (MO) – the steps or processes involved in completing a job. For law enforcement, this usually describes how a suspect works.

Reporting District – several adjacent neighborhood blocks, defined by a police agency, as a reporting area.



Theft – taking of another's property without permission. Losses \$950 and below are petty theft. Losses valued above \$950 are grand theft. Please see CA Penal Code 484 & 487:

<http://www.leginfo.ca.gov/cgi-bin/displaycode?section=pen&group=00001-01000&file=484-502.9>