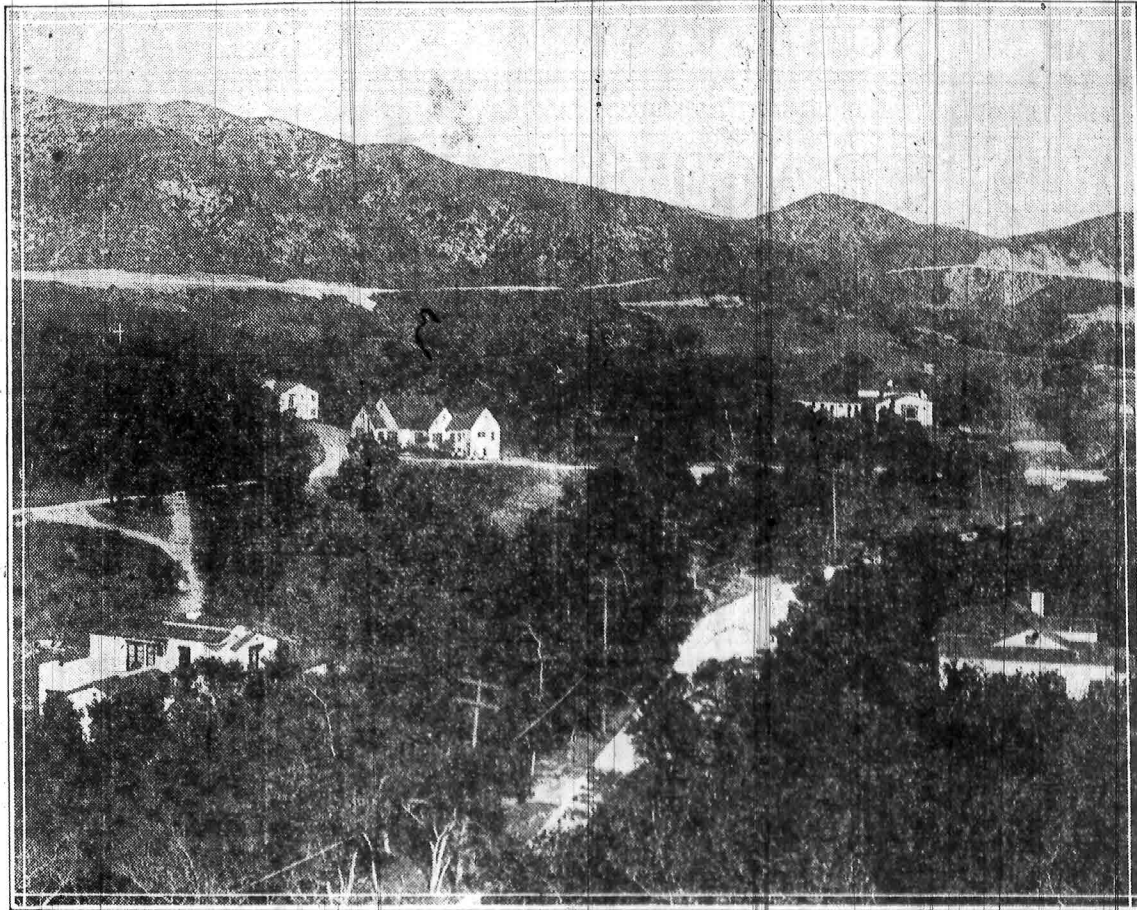


# Tree-Clad Homesites Are Included In New Unit Of Chevy Chase That Is Ready For Buyers



Oak Tree unit, the new tract that is offered by the Bert Farrar organization in Chevy Chase, has been priced at moderate figures. It is stated, owing to the demand that exists for homesites in this region. The natural woodland beauties of the tract have been preserved by the subdividers.

Oak Tree unit is to be the name of a new unit of tree-clad homesites which opens tomorrow in Chevy Chase, according to announcement made today by Bert Farrar. The new unit overlooks the golf course and is declared to be the most desirable yet placed before the public.

"There are a limited number of sites in this new unit and because the prices are very low we expect them to sell at a rapid pace," Farrar stated. "The low price combines with a magnificent view of the golf links and surrounding country to make these sites ideal for homes.

"The numerous trees in this unit insure plenty of shade as well as great natural beauty.

"This unit is being placed on the market now only because of the tremendous demand for medium priced property in Chevy Chase which has made the construction crew rush to keep ahead of the sales.

"The championship Chevy Chase golf course soon will be ready for play and this is one factor which leads us to anticipate an unprecedented demand for property in this new unit that goes on the market tomorrow."

## TO BECOME ELKS

Initiation of a large class of candidates will be held Monday night by Glendale lodge B. P. O. Elks, in their club building, 129 East Colorado. Ceremonies and business meeting will be followed by the serving of refreshments and by a program of entertainment, including motion pictures. The meeting is for members only.

## Maintain High Class In Woodlands Houses

(Continued from page 9)

wishing to be shown the beauties of Verdugo Woodlands, the B. P. O. Newport Co., maintains two offices on Calma, one being located at Calma and the other at Glorietta.

To reach Verdugo Woodlands from the center of the city, go north on Glendale avenue or Verdugo road to Canada, then along that thoroughfare to either of the Newport offices.

A man of La Merced, Penn., is offering collections of butterflies, moths, beetles and birds to museums of this country.

## Faculty Members To Appear In Recital

Miss Gertrude Cleophas, Glendale pianist, is included in the group of faculty members of Glendale branch, Los Angeles Conservatory of Music and Arts, appearing in recital Monday night, January 31, at the Tuesday Afternoon clubhouse. Natural talent, study abroad and extensive experience in concert work, are combined in Miss Cleophas' artistry and her numbers Monday night will be features of the program.

Other members of the faculty taking part are Miss Ruby T. Perry, dramatic reader; Max Donner, violinist; Miss Edith Frances Sinclair, vocalist; Mrs. Angeline M. Donner, Miss Susan Haury, accompanists. The program will