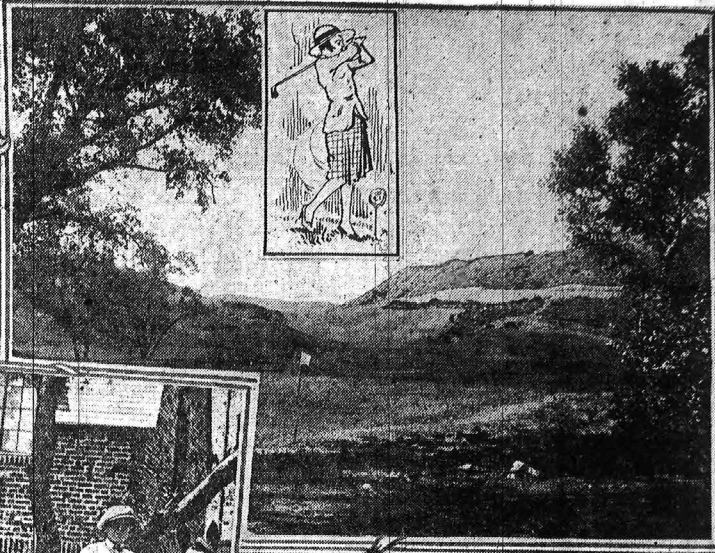


AUTOMOTIVE SECTION

GLENDALE, CALIFORNIA, THURSDAY, JANUARY 6, 1921

A Beautiful Motor Ride in Glendale---Chevy Chase



With its hills and dales, trees, wild flowers and vistas of valley views, broken here and there with new and beautiful homes, Chevy Chase right in the Northeastern section of Glendale offers a delightful afternoon's automobile ride. The boulevards are fine for driving and one can drive right on over the hills to Flintridge and into Pasadena.

CLUB RECALLS REMINISCENCES

Automobiles First Regarded As Passing Fads and Toys for Rich.

ROADS IN LAKE CO. IN GOOD CONDITION

Roads in Lake county are in good condition taking into consideration the unusual rain fall in this section, which to date has been twenty inches, according to the National Automobile club. From Middletown to Callistoga over St. Helena mountain is good gravel road. Middletown to Lower Lake fair dirt and gravel road. Middletown to Kelseyville via Cobb mountain in fair condition but chains advisable in the event of future rains.

MIDLAND TRAIL NOW IN EXCELLENT SHAPE

The Midland trail from Ely to Tonopah, Nevada is now in excellent condition.

MARRIED DRIVERS NEED NO ADVICE, REPORTS INDICATE

Few inventions have advanced in general utility as much as has the automobile during the past quarter century, and few have lured public interest steadily during its

carry two-inch lining, giving a total of 604 square inches of braking surface, which insures long life

and minimum adjustment. The front wheel brake drums and the outer edge of the rear drums have fins machined in the metal to facilitate keeping the drums cool and also to stiffen them against distortion. Adjustment of brakes is